

Pralinkový manuál 2026/ Praline manual 2026



NUGÁT
NOUGAT



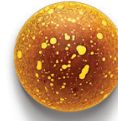
VIŠEŇ
CHERRY



ČERNÝ RYBÍZ SE SMETANOU
BLACKCURRANT WITH CREAM



OŘECHY V KAREMELU
NUTS IN CARAMEL



KOŇAKOVÁ ŠPIČKA
COGNAC IN DARK CHOCOLATE



VAJEČNÝ LIKÉR
EGGNOG



PISTÁCIE
PISTACHIO



MANDARINKA
TANGERINE



ANANAS
PINEAPPLE



MANGO
MANGO



MALINA S RŮŽÍ
RASPBERRY WITH ROSE



POVIDLA
PLUM JAM



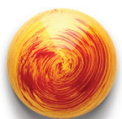
ČERNÝ RYBÍZ S FIALKOU
BLACKCURRANT WITH VIOLET



LEMON TART
LEMON TART



HAVANA 7 Y.O. RUM
HAVANA 7 Y.O. RUM



ŠAFRÁN
SAFFRON



MORAVSKÝ KOLÁČ
MORAVIAN KOLACH



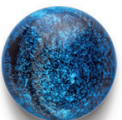
FIALKA
VIOLET



CHILLI
CHILLI



KOKOS
COCONUT



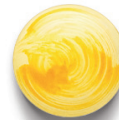
KRUPICOVÁ KAŠE
PORRIDGE



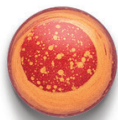
JOGURT S CITRÓNEM
YOGHURT WITH LEMON



KOLA
COLA



YUZU S MARCIPÁNEM
YUZU WITH MARZIPAN



JAHODA S PEPŘEM
STRAWBERRY WITH PEPPER



BORŮVKA S TVAROHEM
BLUEBERRY WITH COTTAGE CHEESE



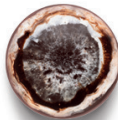
TIMUR PEPŘ
TIMUR PEPPER



KÁVA DOUBLESOT
COFFEE DOUBLESOT



OSTRUŽINA S BAZALKOU
BLACKBERRY WITH BASIL



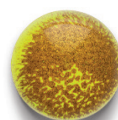
CAPPUCCINO
CAPPUCCINO



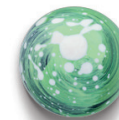
MORAVSKÁ SLÍVA
SLIVOVITZ, PLUM JAN, NUTS



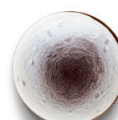
CUBA LIBRE
CUBA LIBRE



POPCORN
POPCORN



PISTÁCIE S CITRÓNEM
PISTACHIO WITH LEMON



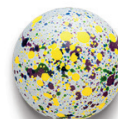
KÁVOVÝ LIKÉR
COFFEE LIQUEUR



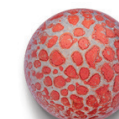
POVIDLA S MÁKEM
PLUM JAM WITH POPPY SEEDS



CHAI LATTÉ
CHAI LATTÉ



TIRAMISU
TIRAMISU



ČERNÝ ČAJ
BLACK TEA



MUČENKA
PASSION FRUIT

Kompletní seznam alergenů najdete na / For the complete list of allergens check: www.kristyjan-chocolatiers.cz

Vyrobeno v Kristyjan Chocolatiers s.r.o., Čs. armády 785/22, Praha 6, 160 00. Uchovávejte v suchu a chladu do 15 stupňů Celsia, chraňte před slunečním zářením.